

A photograph of two men in business attire. The man on the left is older, with grey hair and glasses, wearing a dark blue vest over a light blue shirt and a dark tie. The man on the right is younger, with brown hair and a beard, wearing a dark blue suit jacket over a light blue shirt. They are both looking at a tablet held by the younger man. The background is a blurred industrial or office setting with large windows.

**iptor**   
A GENII COMPANY

# Introducing Iptor Unified Platform

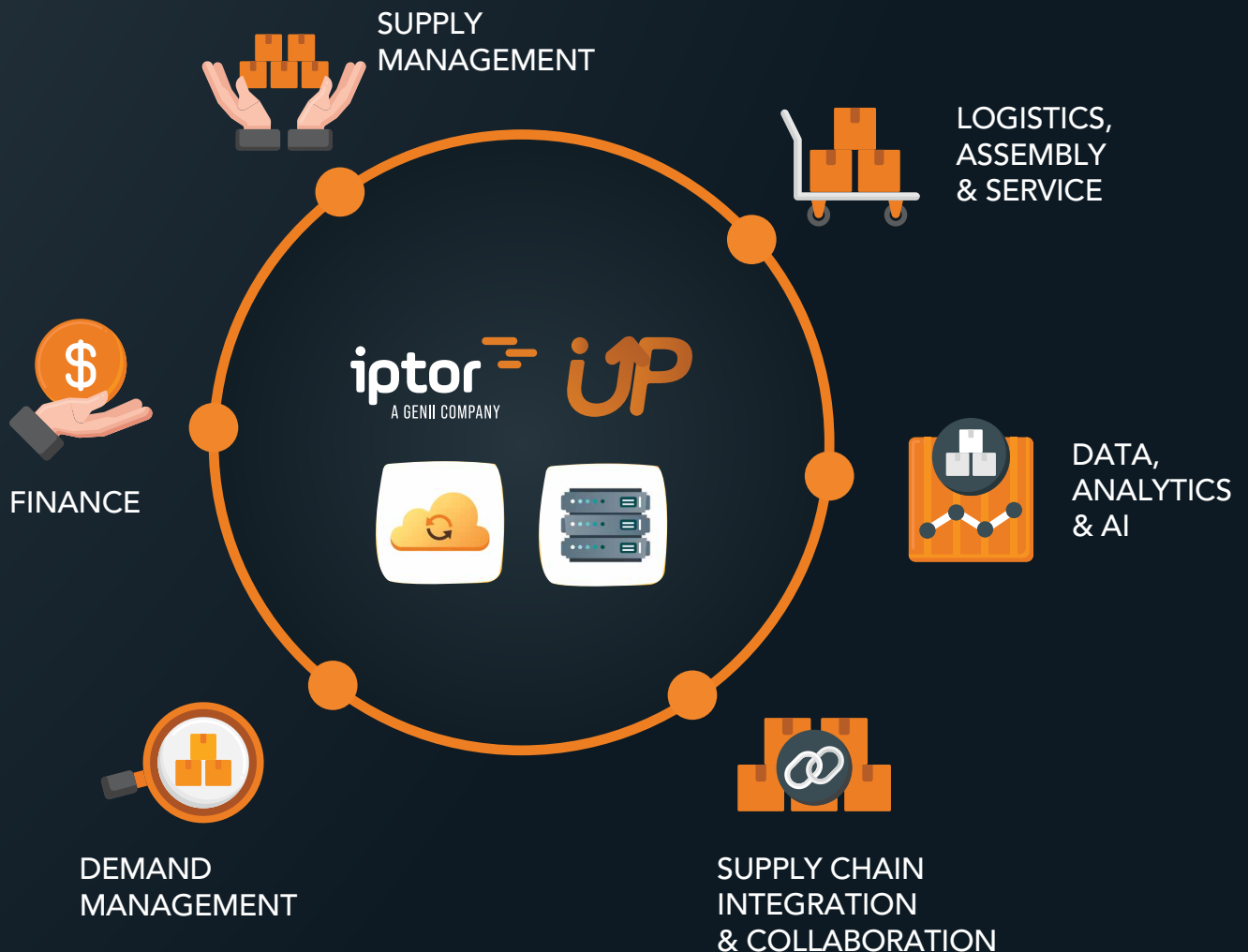
Our latest innovative product for distribution,  
warehousing, and manufacturing businesses

**BROCHURE**

# WHAT IS IPTOR UNIFIED PLATFORM?

Iptor Unified Platform (IUP) is the latest evolution of our flagship ERP solution.

Built on our well-loved, reliable and deeply functional DC1 engine, IUP now has the technological edge, enhanced security, flexible deployment options and modern user experience to support and streamline your business both today and into the future.



## WHY TRANSITION TO IUP?

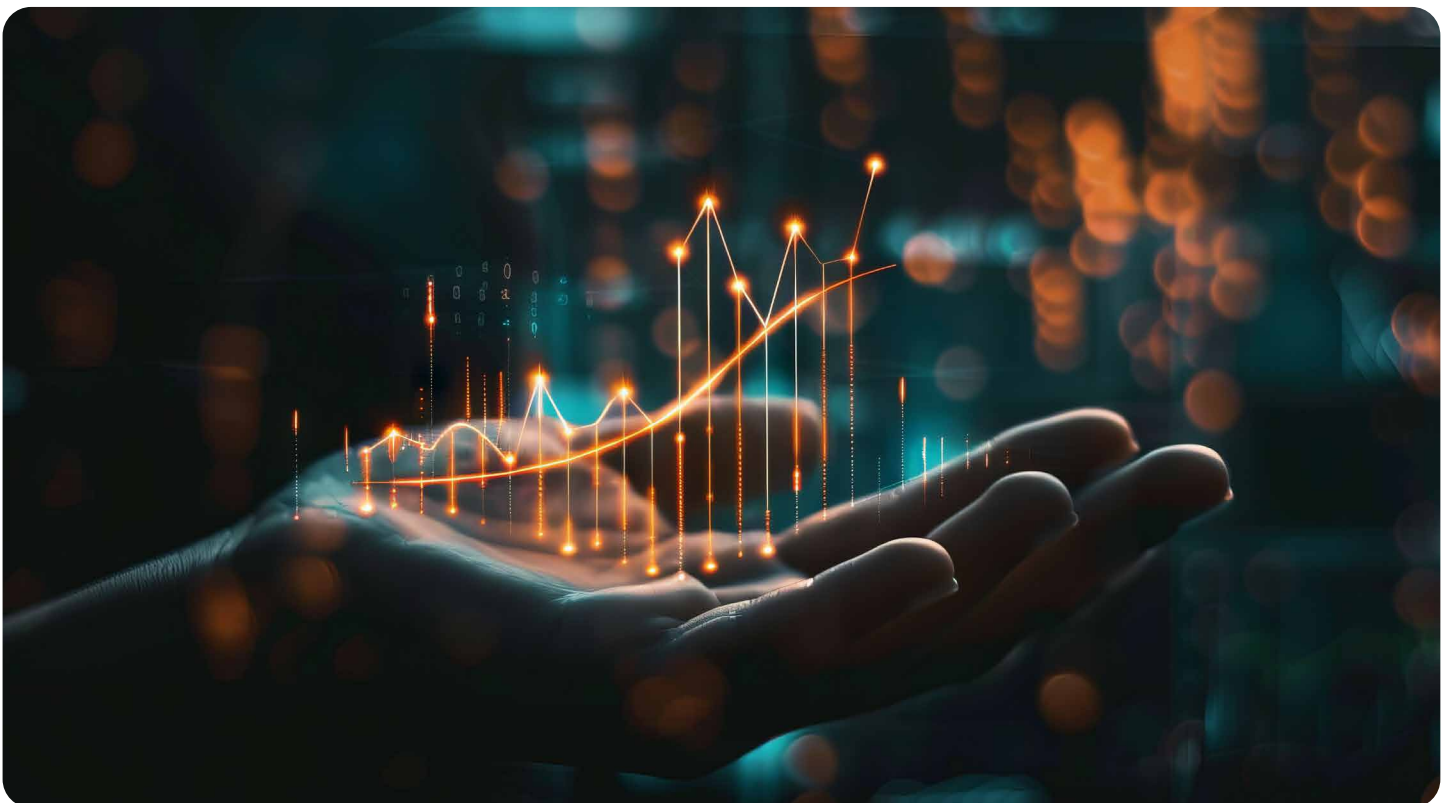
You will never need to worry about a big legacy upgrade project again: The redevelopment of IUP using modern techniques means that new functionality and upgrades are deployed through a quicker cycle of builds.

With our new managed modification option, this can mean you are always up to date, taking advantage of new developments as they are released.

Current and future capabilities: Our modern technological foundation means that we move towards configuration over customisation, integrated AI, better security, increased automation, resulting in a happier workforce and improved efficiency across your business.

Protect your investment and leverage your current configuration – you already know it runs your business!

Updating to IUP is straightforward, we can seamlessly migrate your existing data and settings, ensuring your users can continue their work with confidence while enjoying the new benefits and enhancements.



# A MODERN, SCALABLE, AND SECURE SOLUTION FOR YOUR BUSINESS

Iptor Unified Platform is more than just an ERP system: it's a strategic investment in your business's future.

## KEY IMPROVEMENT AREAS

Our platform offers a user-friendly and modern interface designed for seamless navigation. With customizable dashboards and single sign-on capabilities, users can tailor their experience while ensuring quick and secure access to essential tools.

Scalability and flexibility are at the core of our solution, allowing businesses to choose from multiple deployment options and effortlessly scale up or down based on their evolving needs. Whether you're a growing enterprise or an established company, our technology adapts to support your journey.

Security and compliance are paramount, with advanced data encryption, regular security audits, and adherence to changing global regulations, including e-invoicing. Your data remains protected, and your business stays compliant, no matter where you operate.

Integration has never been easier, thanks to our comprehensive API catalog and cloud-enabled connectivity via Netlang.

Effortlessly communicate with partners and satellite systems, ensuring smooth and efficient operations across all business touchpoints.

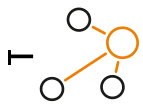
Our intelligent output management system simplifies document handling with a WYSIWYG design, eliminating the need for programming. With support for multiple output formats and fully configurable workflows, businesses can streamline their processes without the need for extensive modifications.

Document archiving and handling are fully integrated, providing automatic storage for incoming and outgoing documents. Gain a 360-degree view of your correspondence with key business partners, leverage powerful indexing and search capabilities, and automate AP invoice processing for greater efficiency.

Stay ahead with a system that is always up to date, with core modifications that are managed for you

**REQUEST A DEMO**



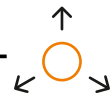


### Streamlined Operations

Boost productivity and reduce errors

AI-powered automation and real-time insights

Intelligent process automation and embedded analytics



### Flexible Deployment

Choose the perfect fit for your business

Seamless transition between deployment options

Cloud, on-premise, or hybrid deployment capabilities



### Enhanced User Experience

Increase user adoption and satisfaction

Intuitive interface designed for modern workflows

Customisable dashboards and mobile accessibility



### Scalable Growth

Adapt quickly to market changes

Modular architecture for easy expansion

Preconfigured processes and global regulatory management



### Robust Security and Compliance

Protect your data and keep up to date with regulatory standards

Built-in cybersecurity and regulatory adherence

24/7 surveillance, audit trails, and secure permissions



### Seamless Integration

Connect all aspects of your business

Extensive API support and third-party compatibility

API platform for custom integrations and partner solutions

## KEY TECHNICAL IMPROVEMENTS

IUP is built on a foundation of key capabilities that drive operational excellence. Automation features, such as robotic process automation (RPA) and workflow automation, will streamline repetitive tasks, reduce human error, and increase productivity. The user-friendly interface, with its intuitive design and customisable dashboards, empowers users to quickly access information, analyse data, and make informed decisions.

IUP offers unparalleled scalability and flexibility, enabling businesses to adapt to changing demands, accommodate growth, and seamlessly integrate with other critical business applications.

Advanced integration capabilities allow seamless communication and data exchange with other systems, creating a more connected and efficient business ecosystem. Finally, robust security measures, including data encryption, access controls, and regular security audits, ensure the protection of sensitive data and compliance with industry regulations.



# FOR A DIGITALLY POWERED DISTRIBUTION INDUSTRY

Digital business is reshaping industries. Consumers nowadays have heightened expectations with increasing demands for faster, omni-channel fulfilment, and increased customer service.

This intensifies the challenge for distributors to remain competitive and profitable. Delivering products at competitive prices is no longer enough.

## CLOUD

Providing a fast track migration path to cloud along with an embedded connectivity and integration platform, and leading, highly secure cloud services.

## AI

Plug and play connectors for the injection of AI to turn data into knowledge and knowledge into automated action through a powerful prediction and resolution engine. Automated interactions with AI chat bots offer user friendly experiences and improve service delivery to customers.

## CONNECTIVITY

Quickly tailor processes to your requirements using Iptor aperío views to easily create relevant information displays, and seamlessly integrate external services into your core processes.

## MOBILITY

Securely connecting every part of the business with new mobility services deployed from the mobile development studio. Prepacked Mobile Web Applications based on the same framework ready for plug and play use.

## VISUAL FLOWS

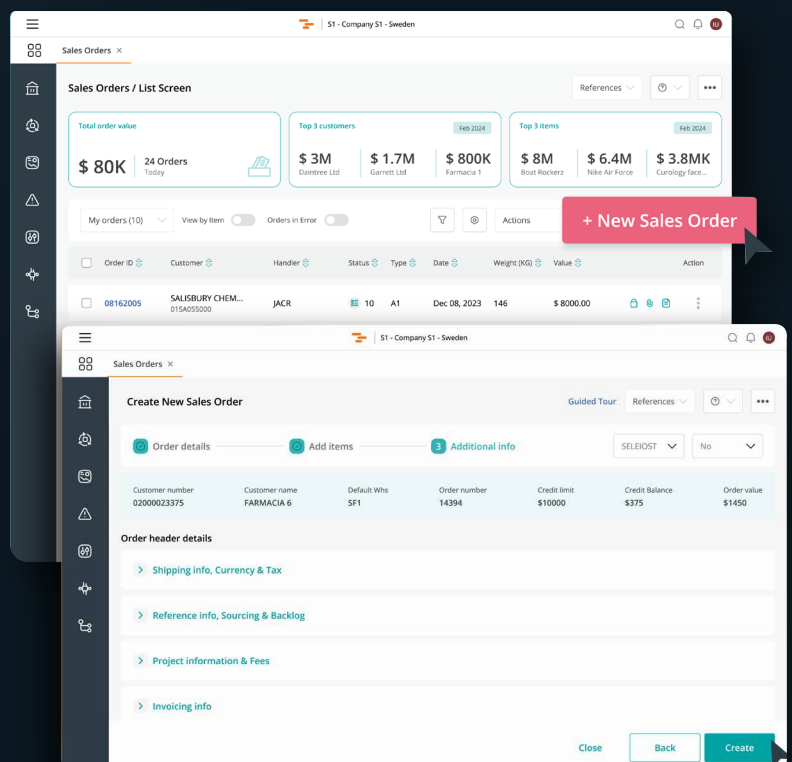
Redefining usability with the Iptor Visual Flows – replacing traditional menus, streamlining internal and external flows – making it easy to learn and navigate in the system.

## VERTICAL INSIGHTS

Vertical insight and expertise from 40 years of serving businesses resulting in industry proven out-of-the-box functionality and tools for dedicated Markets.

Differentiation is required to add value and ensure distributors are irreplaceable extensions of their customers' value chains. IUP provides a complete view of the customer, along with the ability to adapt business processes to better serve them, while forecasting the bottom-line impact of doing so. This enables distributors to optimize operations and provide added value in return for profitable, long term relationship with key clients.

As data becomes one of the most valuable assets that an organization owns, APIs and system integration are becoming a vital digital transformation business tool. The rules of the game have been rewritten to enable an organization to rule the exceptions of today's consumer-driven market demands with a broad range of connected cloud services and cognitive functions.



Introducing Iptor Unified Platform

# SUPPLY CHAIN MANAGEMENT

Iptor Supply Chain Management helps you work with your suppliers to plan, forecast and manage inventory, create optimal pricing and incentive payments, handle all purchase order management, delivery plans, and more. It makes it possible to plan your inventory to provide your ideal level of customer service at the lowest practical inventory costs.

## PROCUREMENT

Iptor's Purchasing Management automates and streamlines all the critical purchasing processes, from requisition and quote management through ordering, quality assurance, contracts and managing all purchase order tasks.

As part of IUP, the software offers rich purchasing management capabilities, covering:

- Invoice/order matching
- Automated Purchase suggestion
- Purchase Order pre-accounting
- PO limits and approval workflow
- Quality Assurance controls
- RFQ (Request for Quotation) generation and management
- Supplier agreement handling
- Supplier structure rules
- Supplier Rebates/Supplier Marketing Support

## INVENTORY CONTROL

One of the easiest ways to reduce costs and increase customer satisfaction is through improvements to your inventory. Improve your cash flow by maximizing stock turnover and reducing costs and tied up capital.

Inventory Control uses different methods for analyzing your stock. It gives you several different ways of looking at your stock situation and makes it more likely you will spot problems early. This sophisticated way to manage inventory enables you to fine tune your business. Inventory Control shows you:

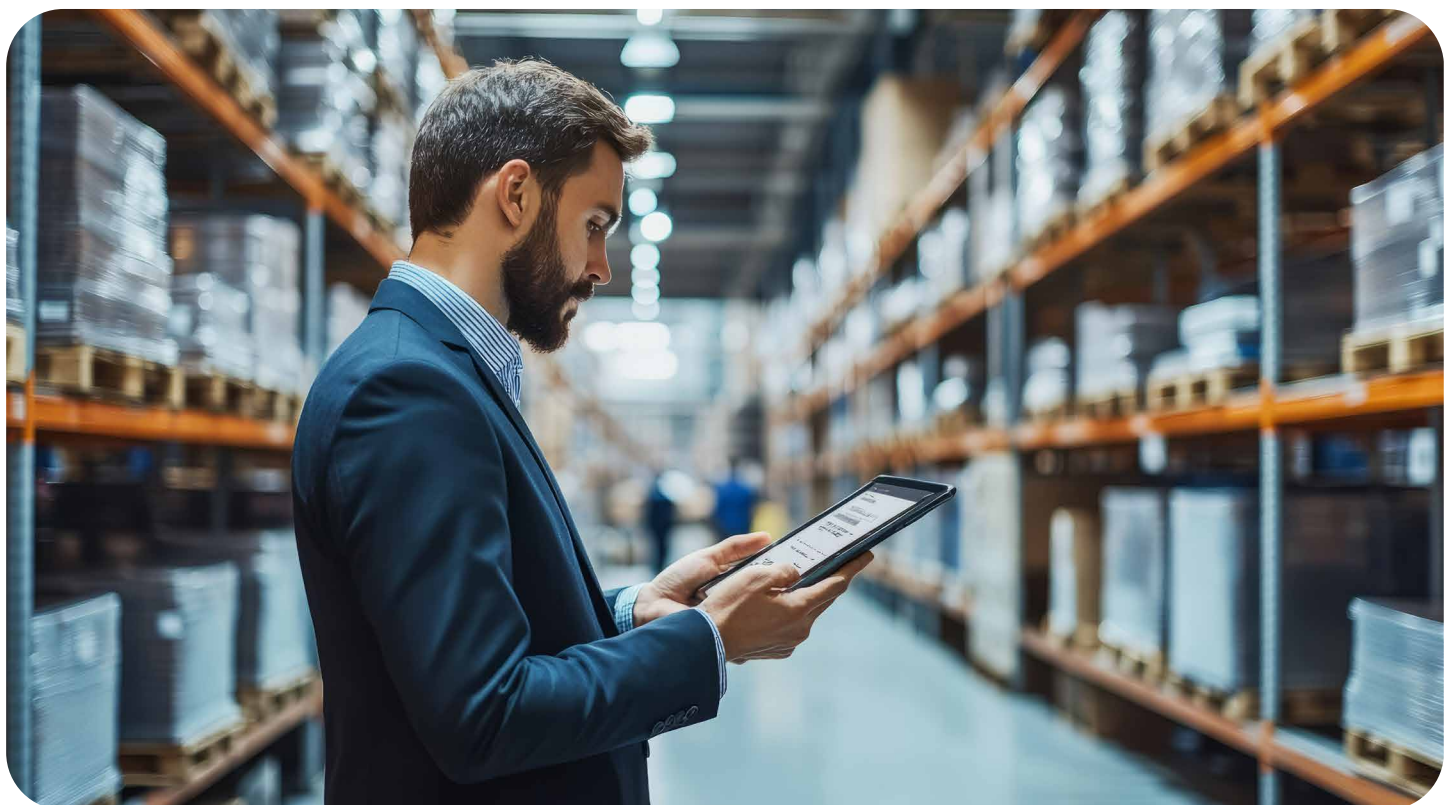
- Volume value and movability
- Excess stock warnings
- A map of seasonal or other trends
- Inventory turnover
- Lead-time analysis and adjustment
- A measure of the service you are getting from suppliers and that you are giving to customers
- An analysis of the variation in demand
- Automatic purchase suggestions
- Alerts of unexpected deviations from your plans



## DEMAND MANAGEMENT

With Iptor's Demand Management solution, you can increase profitable sales by planning, executing and following up customer transactions, from marketing and execution with support for aftermarket margin control.

- Sales Management: controls every process that drives sales and converts orders into cash and profits
- Smart order entry, fast order entry and import options give a smooth and rich order handling
- Easy and powerful quotations rewritten to match sales order entry standards
- Customer Delivery Schedules: Enhances Warehouse Management, Provides New Customer Access, and Faster ROI
- Customer Rebates: automates your discount and bonus program for increased customer satisfaction, loyalty and recurring sales
- Requests and Returns: handle your credits, complaints and returns with customisable workflows to streamline customer service and improve recurring business
- Product Configuration: efficiently tailored products to meet the customer's exact needs



Introducing Iptor Unified Platform

# LOGISTICS, ASSEMBLY AND SERVICE

Our Logistics, Assembly and Services solutions help you optimize, in real time, all your supply processes - in or across warehouses, or on the assembly line - from the simplest to the most complex multi-layer operations.

## ADVANCED WAREHOUSE MANAGEMENT

Our advanced warehouse management module in IUP manages every aspect of your warehouse, in order to drive efficiency throughout your warehouse. It directs picks to ensure you deliver the right items at the right time and suggests putaway options to streamline your warehouse. It safeguards vital customer service levels with tangible efficiency, providing multiple picking options, mobile hand-held and fork-mounted solutions and cross docking to ensure your fast-moving products are turned around efficiently and quickly.

Because the IUP system is fully integrated, it can access sales figures, interpret customer demand and assign space to fast movers. It knows which products have reached critically low inventory levels so your people can prioritize incoming goods with cross-docking suggestions.

- Streamlining receiving, including cross-docking options
- Smart automated put-away suggestions
- Dynamic warehouse replenishment and optimal pick-path
- Multi-level warehouses and distribution centers
- Stock take process, planned or immediate
- Outbound and Inbound for best transportation planning

The system includes rich Bonded Warehouse functionality, to manage the storage, tracking, and movement of duty-suspended goods, ensuring compliance with customs regulations and efficient inventory control.

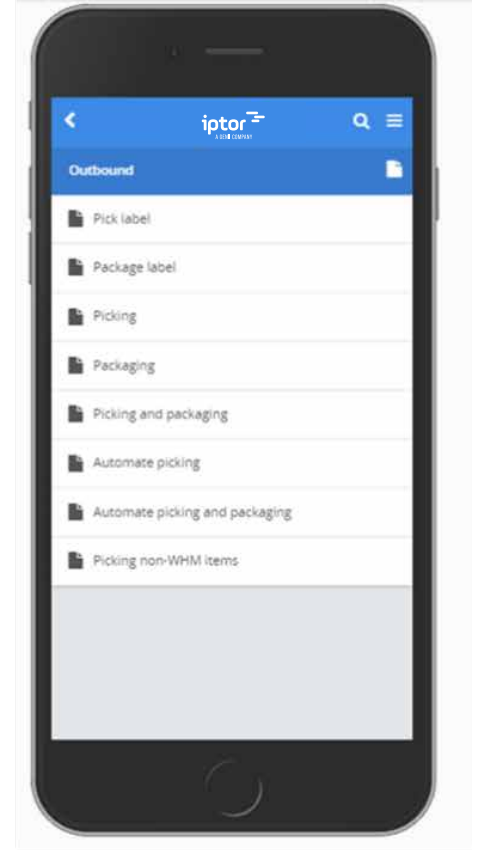
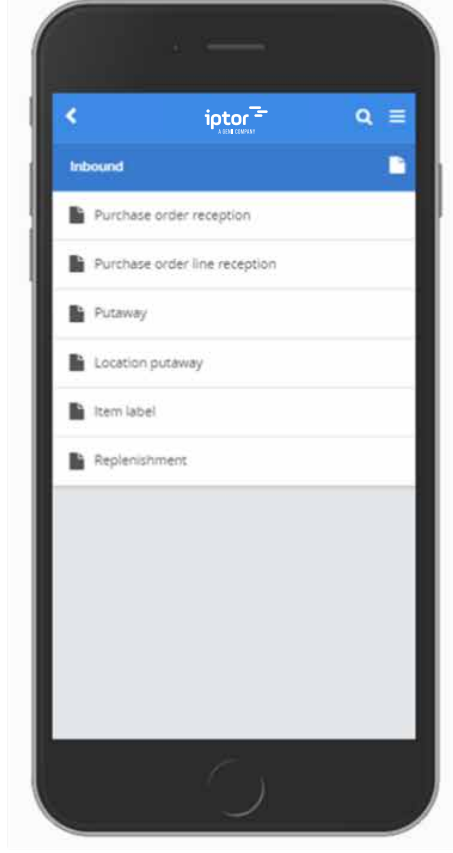
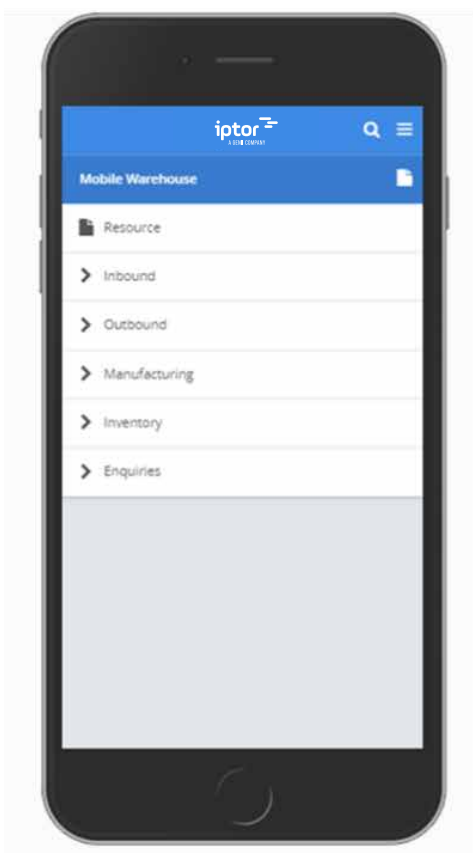
In addition, warehouse location management maximizes the space in your warehouse and automates your processes for reduced costs and improved customer service.

## MOBILE WAREHOUSE

Our Mobile Warehouse solution gives you the opportunity to process warehouse transactions in the warehouse, live and without paper, meaning your warehouse staff do not need to run back to the terminal to book transactions or make adjustments on bits of paper. Your inventory will be real-time, faster, and with increased accuracy, eliminating keying errors.

In addition, Iptor UP Logistics gives you control over:

- Project Management: control projects from planning to delivery
- Dangerous Goods: handling and transporting hazardous substances
- Assembly: For simple assembly environments, where full manufacturing is not required, the system includes a light manufacturing option, to handle the basics in a simpler way
- Multi-Distribution Centre: get visibility of global inventory for efficient internal processing



## SERVICE MANAGEMENT

The Iptor UP service management is fully integrated with customer support, field maintenance and field service operations in a single solution. It handles services you provide to your customers against warranties or service agreements, your internal maintenance, and preventive service on your own machines and tools, and supports enhanced efficiency, improved customer satisfaction, and ensures seamless service delivery through automation and real-time tracking and reporting.

The system allows you to connect a service object to a work centre or tool. In both cases the process can be automated, using recorded meter or other values to suggest when a service should be performed.

## BUSINESS ANALYTICS & PERFORMANCE MONITORING

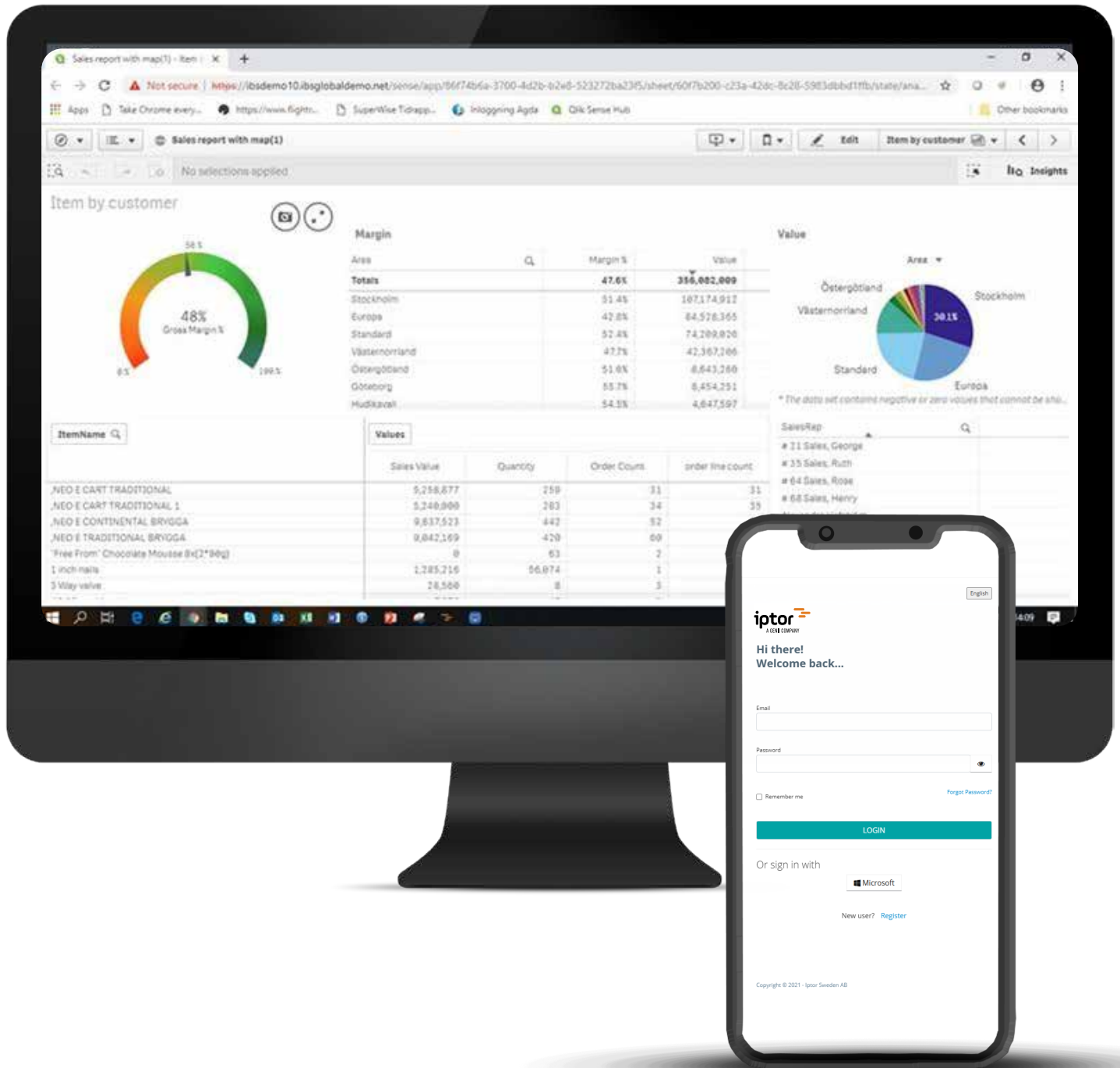
Using our Business Insight Pack (BIP), built using QlikSense, our customers can easily gain insights into their business, which produces high quality graphical BI reporting and ad-hoc reporting as well as the capability to develop your own cutting-edge reporting.

The BIP includes:

- Set of applications and data files
- Across Iptor UP business areas
- Transform to human readable
- Precalculated values & KPI
- Multi company ready
- Standard reports
- Powered by Qlik
- Technical key fields for auto join



# Introducing Iptor Unified Platform



# MANUFACTURING



The IUP Manufacturing Module optimizes production planning, resource management, and shop floor operations to improve efficiency, reduce waste, and ensure on-time delivery. It provides real-time visibility into production processes, material requirements, and quality control, helping your production controllers streamline operations and increase profitability

## MANUFACTURING ORDERS

- Multiple order creation methods for flexible set-up and performance

Manufacturing order entry: orders can be entered manually, copied from existing orders, initiated by and connected to a customer order, or released from an order proposal

Manufacturing order proposals: MRP order proposals are automatically generated at the requirements planning stage and can be easily modified or cancelled. When pull-planning is used, order proposals correspond to the material shortage and priority analysis

- Lead-time calculation/availability check: lead time calculation and availability checks allow sales order availability to be secured even when production lead-times are changing

Manufacturing order documents: can be tailored by order type, including operation list, pick list, operation cards, material cards, assembly report, material list / operation, and product labels

- Operational planning: perform forward or backwards operational planning and connect material operations to minimize WIP costs for materials used later in production. Group manufacturing orders both on header and an operation level to reduce set-up cost (time), extending machine availability, optimizing resources and minimizing waste
- Track and trace batch number: track and trace products in batches by automatically generating batch numbers, at point of manufacturing order creation or product reception, according to number series or using masks
- Kitting list generation and re-creation: ensures the kitting list allocation remains until the order is closed. Material is re-allocated when the kitting list is refreshed, in case components were unavailable at original allocation time
- Manufacturing order pallet handling: create pallets at shop floor (document print and report on pallet), or at manufacturing order reception with associated pallet labels, enabling pallet identity to be used when reporting products to stock
- Reserving batches and booking material: reserve batch-controlled products before a pick list is printed or reserve batches for the included material in manufacturing order maintenance for the BOM

## PRODUCTION SCHEDULING

Work centres and bottleneck planning is done automatically as orders hit the system. There is a graphical planning option which gives your production planners live visibility and control of what is happening in their departments, including options to:

- Refresh and change pull planning proposals
- Create order (manufacturing and/or purchase order)
- Change manufacturing order quantity, start/completion date, order priority/sequence
- Open a closed manufacturing order
- Change manufacturing order operation priority, sequence or work center
- Print manufacturing order operation cards
- Reschedule and/or reset operation
- Manufacturing operation reporting
- Manufacturing order reception
- Change work centre capacity



## **ROUGH-CUT CHECK ON MATERIAL AND CAPACITY AT SALES ORDER ENTRY**

Checks against normal stock and adjusts for exceptions, calculating 'best delivery date' if stock/capacity is not available within the item's planning timeline.

## **MANUFACTURING ALTERNATIVE PRODUCTS (CO-PRODUCTS)**

Accommodates alternative products, or co-products, in response to orders. Alternative products are defined in the manufacturing structure file as possible items to be produced, as a specified percentage or quantity that can be produced as an alternative product. The manufacturing reception function is used to define whether the product is the planned end-product or an alternative that should be received to stock.

## **TOOLS AND FIXTURES**

Plan better with auto allocation of tools for manufacturing order operations. Including the ability to calibrate a tool when it has been used for a specified number of orders, produced pieces or hours.

## **SUBCONTRACT OPERATIONS**

Support external production within internal processes by defining operations as subcontract, creating a purchase order and connecting it to the manufacturing order from the subcontract operations.

## **QUALITY CONTROL**

Obtain quality control reports during the manufacturing process, at manufacturing reception or for stock items. Quality reporting set-up is based on conformity groupings connected to one or many products, with criteria used to define the values to be used for reporting different processes, such as manufacturing operation reporting. Non-conformity certificates are created for quantity reported, for example outside a defined criteria or value.

## **MANUFACTURING ORDER BLOCK ORDER HANDLING**

A 'contract' or 'repetitive manufacturing flow' that enables the creation of daily, weekly or monthly manufacturing orders with some default values, as well as the ability to create simple reception reports with backflushing for both material and operations.



## ACTIVITY ORIENTED PRODUCT COSTING

Flexible and efficient cost control and follow-up is performed with a wide spectrum of options to fit different manufacturing environments. Compute variations of material, machines and labour overheads with cost price simulation functionality. Use alternative manufacturing routes or bills of material while still achieving accurate product cost calculation and follow-up.

Enter any element of a cost calculation either manually, by individual algorithm, or from cost tables. 'What if' analysis is reported performing cost simulations on-line, and entry and calculations for extremely low-cost products is possible, as is the ability to base calculations on standard quantities for product costing on produced items for better accuracy.

Saved current and previous product costs and simulations include total bill of materials (BOM), bill of routing (BOR) and overview presentation, for greater visibility of how it was constructed. BOM/BOR (quantities and times) can be updated from actual manufacturing order statistics (average values), and there is a detailed audit trail to track all BOM/BOR changes.



# FINANCIALS

IUP Financials software makes financial processes easy to handle and completely transparent. The software can handle all transaction volume, including a full range of purchasing and payment processes in multiple simultaneous currencies. Use it for multi-layer operations in several countries, or in a wholesale distribution warehouse. Its integrated financial tools help you manage capital costs, assets, money, and other resources required to run a modern distribution business.



## ACCOUNTS PAYABLE (AP)

crucial for maintaining supplier relationships and optimizing cash flow



## ACCOUNTS RECEIVABLE (AR)

manage and monitor all aspects of your payment processes



## GENERAL LEDGER

Make better decisions based on efficient, easy-to-use daily accounting



## ASSET REGISTER

integrate the financial and physical management of your machines, systems, computers and other office equipment



## SUNDRY INVOICING

enables billing of non-standard business in your sales flow



## CASH FLOW MANAGER

Plan, create forecasts, simulate, and manage your business and gain control over your Cash Flow

## GENERAL LEDGER

IUP General Ledger functionality is designed for efficient, easy-to-use daily accounting that gives the management team the insight it needs to make better decisions.

Now your entire operational performance is clear, transparent and accounted for, including:

- Flexible chart of accounts and summary identities enabling rich analysis
- Easy manual and automated data entry

- Parallel transaction-, system- and reporting currencies
- Automatic posting, validation and currency revaluation
- Accruals, recurring journals and standing orders
- Reconciliation
- Unlimited parallel budgets and forecasts
- Cost accounting and cost allocation
- Year-end closing procedures

The software is rich but the concepts are simple: automation, validation and visibility into the entire business.

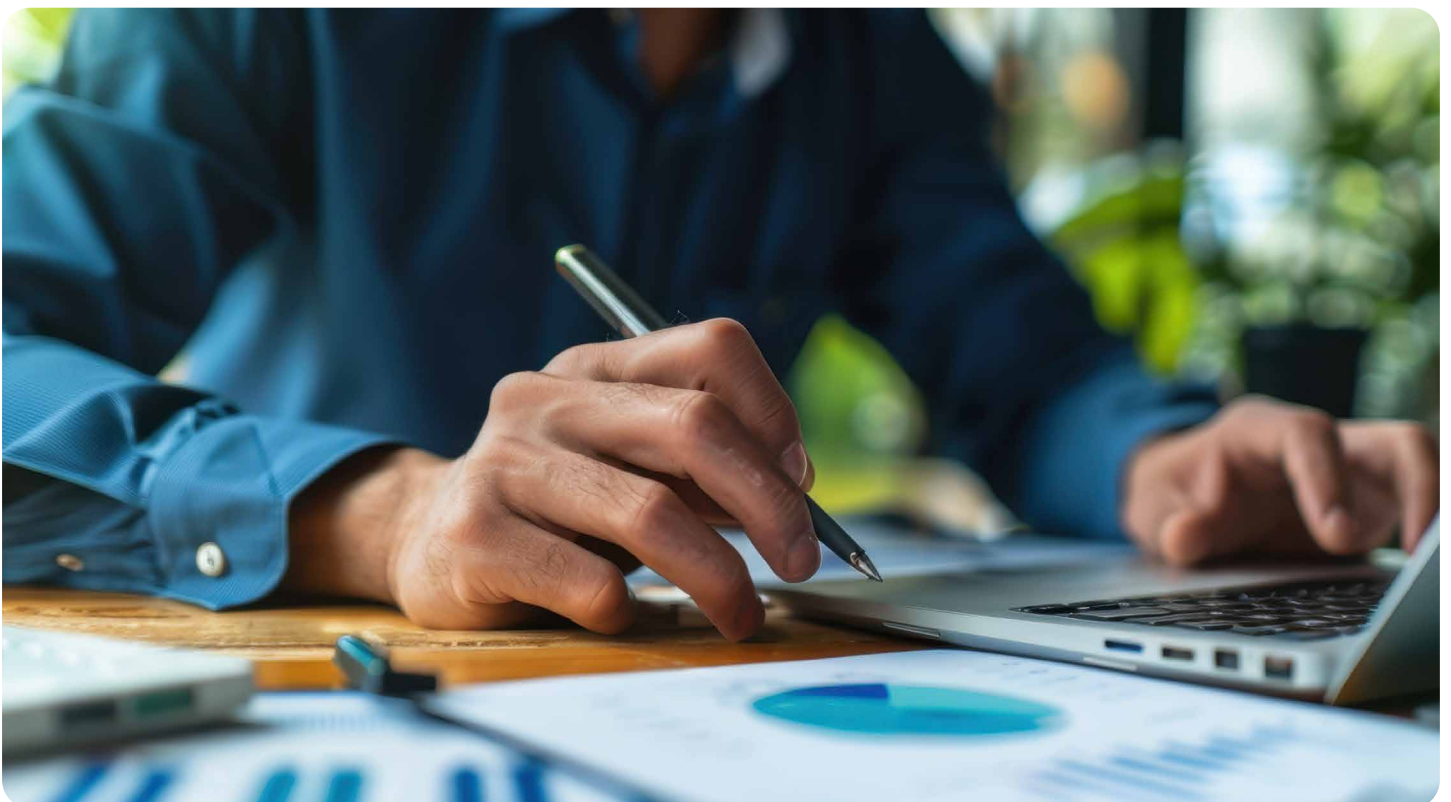
## ACCOUNTS RECEIVABLE

IUP Accounts Receivable lets you manage and monitor every payables process including:

- **Customer set-up** – including credit status, payment terms & methods, and partner structure relationships
- **Invoice processing** – automatic invoice update, rebate handling, stepwise processing, multiple VAT rates, installment payments, and more
- **General Ledger Accounting** – with expense coding, invoice allocation over time, revaluation based on currency fluctuation, and more
- **Incoming payments** – multi-currency order summary & settlement, batch payments, automated cash allocation, credit note management, automatic posting, etc

- **Drafts and bills handling** – manage draft proposals and acceptances, create and remit bills portfolio
- **Credit management** – effective credit control, automated hold & release, customer credit profile, re-aging and more
- **Enquiries** – age and cash flow analysis, credit control and follow-up, full drill-down
- **Extensive reporting** – cash flow and age analysis; customer lists and labels; transaction listing, open items, payment statistics, reconciliation and more

It's all completely transparent, trackable and auditable to deliver unparalleled levels of management visibility into the entire subledger and its impact on the business.



## ACCOUNTS PAYABLE

The Accounts Payable sub-ledger mirrors Accounts Receivables offering rich, secure functionality handled in a consistent way.

Core processes covered include:

- **Business partner set-up** – including credit status, payment terms & methods, and partner structure relationships
- **General Ledger Accounting** – with expense coding, invoice allocation over time, revaluation based on currency fluctuation, and more
- **Invoice matching** – controlling invoice vs. purchase order with automatic calculation of differences with complete workflow to validate the invoices and automatic booking

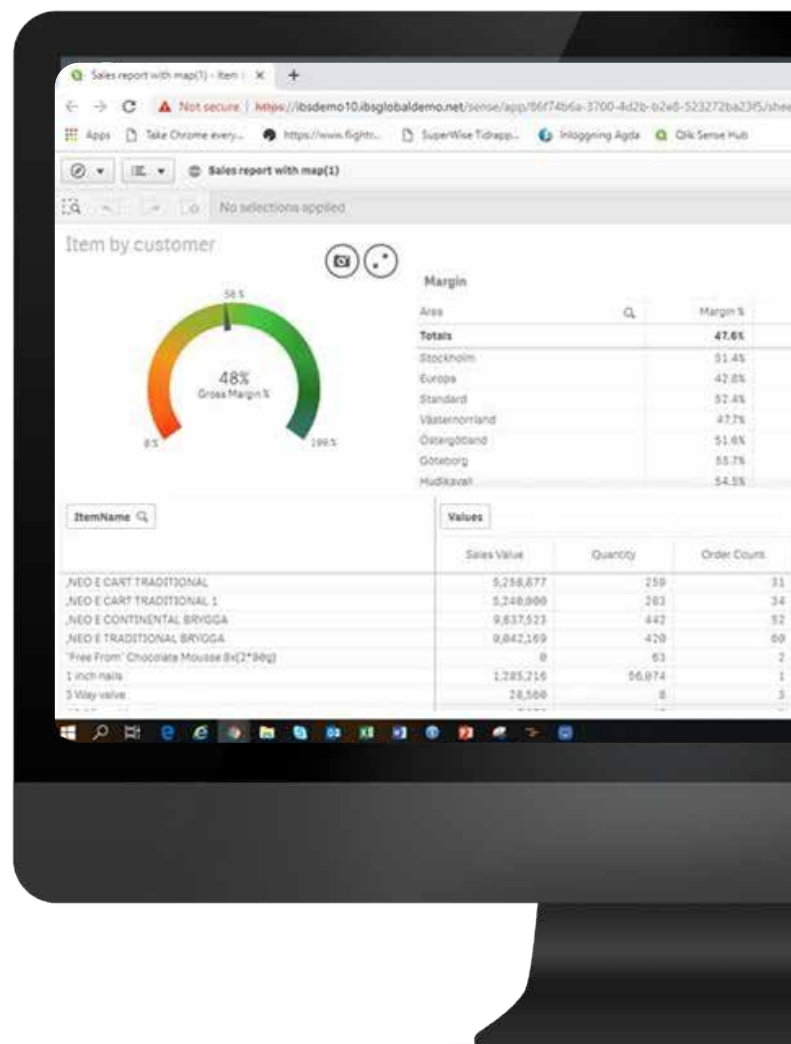
- **Outgoing payments** – manage approvals workflow, payment dates, countries, currencies & payment methods, plus remittance advice, bank transfers, and more
- **Enquiries** – age and cash flow analysis, credit control and follow-up, full drill-down
- **Extensive reporting** – cash flow and age analysis; supplier lists and labels; transaction listing, open items, payment statistics, reconciliation and more

## ASSET MANAGEMENT

Iptor Asset Management lets you control all these things from within your distribution software system because it is integrated with IUP Financials.

Financially it enables you to:

- Calculate useful life.
- Work out depreciation.
- Handle leasing, non-tangible assets and financial assets.
- Automatically calculate profit and loss and update easily for reconciliation.
- Make budget comparisons.
- Plan future investments and depreciation.
- Revalue assets to manage insurance premiums.



# CLOUD VS ON PREMISE

Flexible deployment options: IUP offers both cloud and on-premise deployment options, providing businesses with the flexibility to choose the solution that best meets their specific needs. While both options offer identical core functionalities, the cloud deployment provides several key advantages, including reduced maintenance overhead, faster access to updates, and enhanced scalability. The on-premises option provides businesses with greater control over their infrastructure and data, making it suitable for organizations with specific data sovereignty or compliance requirements.



## CLOUD BENEFITS

### SCALABILITY AND AGILITY

Scale your operations effortlessly with our cloud-based solution. Easily adapt to changing business demands without worrying about infrastructure limitations.

### SIMPLIFIED MANAGEMENT

Enjoy the benefits of automatic updates, maintenance, and security with our cloud solution, freeing your IT team to focus on strategic initiatives.

### ANYTIME, ANYWHERE ACCESS

Empower your teams to collaborate and access critical business data from any device, anywhere in the world.



## ON-PREMISE BENEFITS

### ENHANCED SECURITY AND CONTROL

Maintain complete control over your data with our on-premise deployment option. This solution is ideal for organizations with strict data security requirements.

### CUSTOMIZATION FLEXIBILITY

Tailor the Iptor Unified Platform to your specific needs with greater control over customization on-premise.

### INTEGRATION WITH EXISTING INFRASTRUCTURE

Seamlessly integrate the platform with your existing on-premise infrastructure for a unified workflow.



## SUMMARY

Iptor Unified Platform (IUP) is a transformative ERP solution designed to meet the evolving needs of distribution, warehousing, and manufacturing companies. With its core DC1 engine, compliance is made easy with end to end enterprise grade encryption powered by the robust IBM iSeries, which provides a reliable, stable and rock solid platform.

It has a modern UI, advanced third-party integrations, and future-ready capabilities, Iptor Unified Platform (IUP) stands out in a competitive market, offering unparalleled flexibility, efficiency, and innovation.

Whether deployed on-premise or in the cloud, Iptor Unified Platform (IUP) empowers businesses to streamline operations, enhance decision-making, and stay ahead of technological advancements.

TO LEARN MORE  
ABOUT IPTOR  
UNIFIED PLATFORM,  
VISIT US ONLINE

[IPTOR.COM](https://iptor.com)

